

Bead mill consumables



Omni Bead Ruptor™ bead tube kits include everything you need to homogenize efficiently.

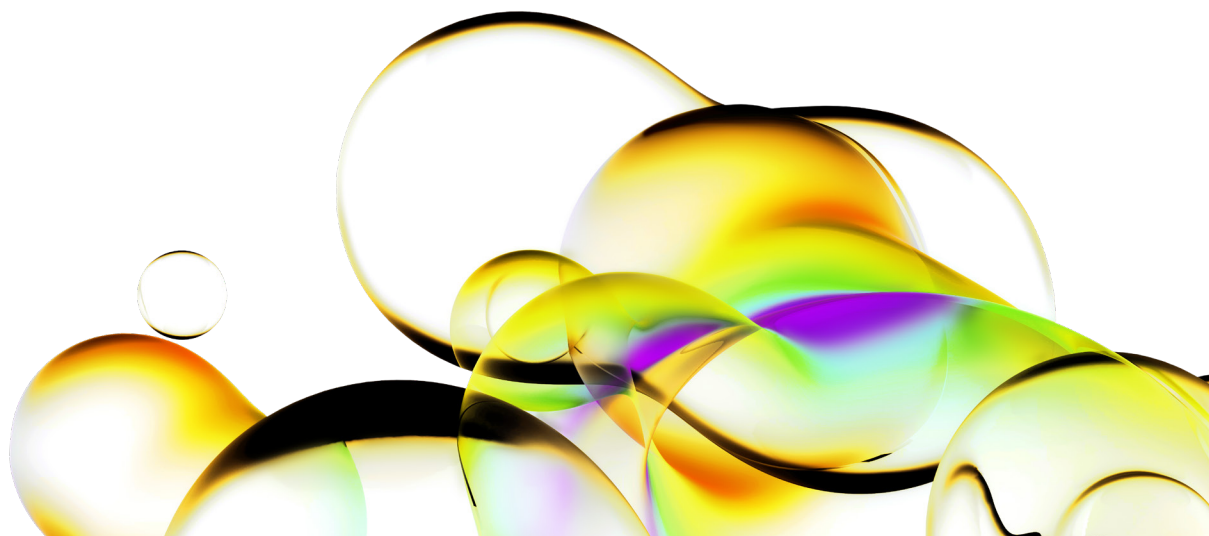
Bead beating is the most effective and versatile lysis method available. Revvity offers users the ultimate flexibility with a range of bead beating tubes and lysing matrices to support efficient homogenization of a wide range of samples. Omni Bead Ruptor bead beating tubes can be purchased in bulk or pre-filled with an optimized amount of lysing matrix to provide efficient, consistent, and high-yield sample homogenates.

Omni Bead tubes should be used exclusively with Omni Bead Ruptor homogenizers.

Bead mill homogenizers allow for closed vessel and multiple sample processing, minimizing risk of cross-contamination. Our homogenizers and bead beating tubes are very beneficial to various laboratories that process a wide range of sample volumes.

Features

- Wide variety of lysing matrices available
- Tubes are optimized to withstand high impact forces
- Multiple purity grades to ensure high analyte integrity



Pre-filled bead mill tubes

| Bead Media | Tube Size | Bead Size | Description | Quantity | Part Number | Compatibility BR4 | Compatibility BR12 | Compatibility BR24 | Compatibility BRElite | DNase/RNase Free | Microbial DNA Free |
|------------|-----------|-------------------|--|----------|-------------|-------------------|--------------------|--------------------|-----------------------|------------------|--------------------|
| Carbide | 0.5 mL | 0.25 mm | RNA Extraction & Soil Homogenizing Mix | 50 | 19-625 | Yes 5 m/s | Yes 6 m/s | Yes 6.5 m/s | Yes 8 m/s | Yes | No |
| Ceramic | 0.5 mL | 1.4 mm | Soft Tissue Homogenizing Mix | 50 | 19-626 | Yes 5 m/s | Yes 6 m/s | Yes 6.5 m/s | Yes 8 m/s | Yes | No |
| Ceramic | 0.5 mL | 1.4 mm | Soft Tissue Homogenizing Mix | 50 | 19-626D | Yes 5 m/s | Yes 6 m/s | Yes 6.5 m/s | Yes 8 m/s | Yes | Yes |
| Ceramic | 1.5 mL | 1.4 mm | Soft Tissue Homogenizing Mix | 50 | 19-617 | Yes 5 m/s | No | No | Yes 5 m/s | Yes | No |
| Ceramic | 1.5 mL | 1.4 mm | Soft Tissue Homogenizing Mix | 50 | 19-617D | Yes 5 m/s | No | No | Yes 5 m/s | Yes | Yes |
| Ceramic | 1.5 mL | 2.8 mm | Hard Tissue Homogenizing Mix | 50 | 19-618 | Yes 5 m/s | No | No | Yes 5 m/s | Yes | No |
| Ceramic | 1.5 mL | 2.8 mm | Hard Tissue Homogenizing Mix | 50 | 19-618D | Yes 5 m/s | No | No | Yes 5 m/s | Yes | Yes |
| Ceramic | 2 mL | 0.1 mm | Universal Microbial Homogenizing Mix | 50 | 19-632 | Yes 5 m/s | Yes 6 m/s | Yes 6.5 m/s | Yes 8 m/s | Yes | No |
| Ceramic | 2 mL | 0.1 mm | Universal Microbial Homogenizing Mix | 50 | 19-632D | Yes 5 m/s | Yes 6 m/s | Yes 6.5 m/s | Yes 8 m/s | Yes | Yes |
| Ceramic | 2 mL | 0.1 mm | Homogenizing Mix | 50 | 19-634 | Yes 5 m/s | Yes 6 m/s | Yes 6.5 m/s | Yes 8 m/s | Yes | No |
| Ceramic | 2 mL | 0.1 mm | Homogenizing Mix | 50 | 19-683D | Yes 5 m/s | Yes 6 m/s | Yes 6.5 m/s | Yes 8 m/s | Yes | Yes |
| Ceramic | 2 mL | 0.1 mm and 2.8 mm | Microbiome Homogenizing Mix | 50 | 19-636D | Yes 5 m/s | Yes 6 m/s | Yes 6.5 m/s | Yes 8 m/s | Yes | Yes |
| Ceramic | 2 mL | 0.5 mm | Universal Microbial Grinding Mix | 50 | 19-631 | Yes 5 m/s | Yes 6 m/s | Yes 6.5 m/s | Yes 8 m/s | Yes | No |
| Ceramic | 2 mL | 0.5 mm | Universal Microbial Grinding Mix | 50 | 19-631D | Yes 5 m/s | Yes 6 m/s | Yes 6.5 m/s | Yes 8 m/s | Yes | Yes |
| Ceramic | 2 mL | 1.4 mm | Soft Tissue Homogenizing Mix | 50 | 19-627 | Yes 5 m/s | Yes 6 m/s | Yes 6.5 m/s | Yes 8 m/s | Yes | No |
| Ceramic | 2 mL | 1.4 mm | Soft Tissue Homogenizing Mix | 50 | 19-627D | Yes 5 m/s | Yes 6 m/s | Yes 6.5 m/s | Yes 8 m/s | Yes | Yes |
| Ceramic | 2 mL | 1.4 mm and 2.8 mm | Homogenizing Mix | 50 | 19-629 | Yes 5 m/s | Yes 6 m/s | Yes 6.5 m/s | Yes 8 m/s | Yes | No |
| Ceramic | 2 mL | 2.8 mm | Hard Tissue Homogenizing Mix | 50 | 19-628 | Yes 5 m/s | Yes 6 m/s | Yes 6.5 m/s | Yes 8 m/s | Yes | No |
| Ceramic | 2 mL | 2.8 mm | Hard Tissue Homogenizing Mix | 50 | 19-628D | Yes 5 m/s | Yes 6 m/s | Yes 6.5 m/s | Yes 8 m/s | Yes | Yes |
| Ceramic | 7 mL | 1.4 mm | Soft Tissue Homogenizing Mix | 50 | 19-677 | Yes 5 m/s | Yes 6 m/s | No | Yes 6 m/s | No | No |
| Ceramic | 7 mL | 2.8 mm | Hard Tissue Homogenizing Mix | 50 | 19-678 | Yes 5 m/s | Yes 6 m/s | No | Yes 6 m/s | Yes | No |
| Ceramic | 7 mL | 2.8 mm | Hard Tissue Homogenizing Mix | 50 | 19-678D | Yes 5 m/s | Yes 6 m/s | No | Yes 6 m/s | Yes | Yes |
| Ceramic | 15 mL | 2.8 mm | Hard Tissue Homogenizing Mix | 50 | 19-6158 | No | No | No | Yes 8 m/s | No | No |
| Ceramic | 30 mL | 1.4 mm | Soft Tissue Homogenizing Mix | 50 | 19-6357 | No | No | No | Yes 5 m/s | No | No |

Pre-filled bead mill tubes (*continue*)

| Bead Media | Tube Size | Bead Size | Description | Quantity | Part Number | Compatibility BR4 | Compatibility BR12 | Compatibility BR24 | Compatibility BRElite | DNase/RNase Free | Microbial DNA Free |
|------------|-----------|-------------------|-------------------------------------|----------|-------------|-------------------|--------------------|--------------------|-----------------------|------------------|--------------------|
| Ceramic | 30 mL | 1.4 mm | Soft Tissue Impact Homogenizing Mix | 50 | 19-6357Z | No | No | No | Yes 5 m/s | No | No |
| Ceramic | 30 mL | 2.8 mm | Hard Tissue Homogenizing Mix | 50 | 19-6358 | No | No | No | Yes 5 m/s | Yes | No |
| Ceramic | 30 mL | 2.8 mm | Hard Tissue Homogenizing Mix | 50 | 19-6358D | No | No | No | Yes 5 m/s | Yes | Yes |
| Ceramic | 30 mL | 2.8 mm | Hard Tissue Impact Homogenizing Mix | 50 | 19-6358Z | No | No | No | Yes 5 m/s | No | No |
| Ceramic | 50 mL | 2.8 mm | Hard Tissue Homogenizing Mix | 50 | 19-6508 | No | No | No | Yes 5 m/s | No | No |
| Garnet | 0.5 mL | 0.15 mm | Micro-Organism Lysing Mix | 50 | 19-623 | Yes 5 m/s | Yes 6 m/s | Yes 6.5 m/s | Yes 8 m/s | Yes | No |
| Garnet | 2 mL | 0.7 mm | Hard & Fibrous Tissue Mix | 50 | 19-624 | Yes 5 m/s | Yes 6 m/s | Yes 6.5 m/s | Yes 8 m/s | Yes | No |
| Garnet | 7 mL | 0.7 mm | Homogenizing Mix | 50 | 19-674 | Yes 5 m/s | Yes 6 m/s | No | Yes 6 m/s | No | No |
| Glass | 0.5 mL | 0.1 mm and 0.5 mm | Homogenizing Mix | 50 | 19-630D | Yes 5 m/s | Yes 6 m/s | Yes 6.5 m/s | Yes 8 m/s | Yes | Yes |
| Glass | 2 mL | 0.1 mm | Micro-Organism Lysing Mix | 50 | 19-621 | Yes 5 m/s | Yes 6 m/s | Yes 6.5 m/s | Yes 8 m/s | Yes | No |
| Glass | 2 mL | 0.5 mm | Tough Micro-Organism Lysing Mix | 50 | 19-622 | Yes 5 m/s | Yes 6 m/s | Yes 6.5 m/s | Yes 8 m/s | Yes | No |
| Glass | 2 mL | 0.5 mm | Tough Micro-Organism Lysing Mix | 50 | 19-622D | Yes 5 m/s | Yes 6 m/s | Yes 6.5 m/s | Yes 8 m/s | Yes | Yes |
| Glass | 7 mL | 0.5 mm | Homogenizing Mix | 50 | 19-672 | Yes 5 m/s | Yes 6 m/s | No | Yes 6 m/s | No | No |
| Metal | 1.5 mL | 2.4 mm | Hard Tissue Grinding Mix | 50 | 19-610 | Yes 5 m/s | No | No | Yes 5 m/s | Yes | No |
| Metal | 2 mL | 2.4 mm | Hard Tissue Grinding Mix | 50 | 19-620 | Yes 5 m/s | Yes 6 m/s | Yes 6.5 m/s | Yes 8 m/s | Yes | No |
| Metal | 2 mL | 2.4 mm | Hard Tissue Grinding Mix | 50 | 19-620D | Yes 5 m/s | Yes 6 m/s | Yes 6.5 m/s | Yes 8 m/s | Yes | Yes |
| Metal | 7 mL | 2.4 mm | Hard Tissue Grinding Mix | 50 | 19-670 | Yes 5 m/s | Yes 6 m/s | No | Yes 6 m/s | No | No |
| Metal | 30 mL | 2.4 mm | Hard Tissue Grinding Mix | 50 | 19-6350 | No | No | No | Yes 5 m/s | No | No |
| Metal | 30 mL | 2.4 mm | Hard Tissue Impact Grinding Mix | 50 | 19-6350Z | No | No | No | Yes 5 m/s | No | No |

Bulk bead mill tubes

| Tube selection guide | | | | | | | |
|----------------------|----------------|-----------------|-------------|--------------|--------------|-------|-------|
| Volume range | | | | | | | |
| Tube size | 20 µL | 100 µL | 1 mL | 5 mL | 15 mL | 30 mL | 50 mL |
| 0.5 mL | 20 µL - 300 µL | | | | | | |
| 1.2 mL stripwell | 20 µL - 800 µL | | | | | | |
| 1.5 mL | | 200 µL - 1 mL | | | | | |
| 2 mL | | 100 µL - 1.8 mL | | | | | |
| 7 mL | | | 1 mL - 5 mL | | | | |
| 15 mL | | | | 5 mL - 15 mL | | | |
| 30 mL | | | | | 2 mL - 20 mL | | |
| 50 mL | | | | | 2 mL - 35 mL | | |



| Omni Bead Ruptor | Tube size | Description | Quantity | DNase/RNase free | Order # |
|---|-----------------------|--|----------|------------------|-------------|
| Omni Bead Ruptor 4 (25-010) | 0.5 mL | Non-reinforced Tubes with caps | 500 | ■ | 19-650 |
| | 1.5 mL | Polypropylene microtube, RNase, DNase free | 500 | ■ | 19-661 |
| | | | 1,000 | ■ | 19-661-1000 |
| Omni Bead Ruptor 12 (19-050) | 2 mL | Non-reinforced Tubes with caps | 500 | ■ | 19-647 |
| | | Reinforced Tubes with caps | 500 | ■ | 19-648 |
| | | | 1,000 | ■ | 19-649 |
| Omni Bead Ruptor Elite (19-042E) | 7 mL | Empty Tubes with caps | 500 | ■ | 19-651-500 |
| | | | 1,000 | ■ | 19-651 |
| Omni Bead Ruptor Elite (19-042E) | 1.2 mL | Rack of 96 Strip Well Tubes | 10 racks | ■ | 19-696 |
| | 15 mL | Empty Tubes with caps | 100 | | 19-6615 |
| | | | 500 | | 19-6615-500 |
| | 30 mL | Empty Tubes with caps | 100 | ■ | 19-6635 |
| | | | 500 | ■ | 19-6635-500 |
| 50 mL | Empty Tubes with caps | 100 | | 19-6650 | |



Omni Bead Ruptor 4



Omni Bead Ruptor 12



Omni Bead Ruptor Elite

Bulk beads certified RNase/DNase free

| Bead Selection Guide | | | | | | | | | | |
|--|--------|--------|---------|--------|---------|--------|--------|--------|--------|--------|
| Bead media | | | | | | | | | | |
| | Glass | | Garnet | | Ceramic | | | Metal | | |
| Sample type | 0.1 mm | 0.5 mm | 0.15 mm | 0.7 mm | 0.1 mm | 0.5 mm | 1.4 mm | 2.8 mm | 6.5 mm | 2.4 mm |
| Bacteria/Yeast | █ | █ | | | █ | █ | | | | |
| Spores | █ | █ | | | █ | █ | | | | |
| Algae/Plankton | | █ | | | | █ | | | | |
| Soft Soil/Sediment/ Waste Water | | | █ | | | █ | | | | |
| Clay/Faeces/Sludge | | | | █ | | █ | | | | |
| Soft Tissues, Brain, Liver, Kidney, Cultured Mammalian Cells | | | | | | | █ | █ | | |
| Hard Tissues, Heart, Muscle, Skin | | | | | | | | | | █ |
| Plant material | | | | | | | | | | |
| Dry grinding | | | | | | | | | █ | █ |
| Dense Biological Material Hair, Bone, Seeds | | | | | | | | | █ | █ |

| Bead media | Bead size | Bead quantity | Description | Order # |
|------------|-----------|---------------|------------------------|---------|
| Glass | 0.1 mm | 400 g | Fills 500 x 2 mL tubes | 19-641 |
| | 0.5 mm | 400 g | Fills 500 x 2 mL tubes | 19-642 |
| Garnet | 0.15 mm | 500 g | Fills 500 x 2 mL tubes | 19-643 |
| | 0.7 mm | 500 g | Fills 500 x 2 mL tubes | 19-644 |
| Ceramic | 0.1 mm | 500 g | Fills 500 x 2 mL tubes | 19-683 |
| | 0.5 mm | 500 g | Fills 500 x 2 mL tubes | 19-684 |
| | 1.4 mm | 325 g | Fills 500 x 2 mL tubes | 19-645 |
| | 2.8 mm | 325 g | Fills 500 x 2 mL tubes | 19-646 |
| | 6.5 mm | 325 g | Fills 500 x 2 mL tubes | 19-682 |
| Metal | 2.4 mm | 500 g | Fills 500 x 2 mL tubes | 19-640 |



Ceramic



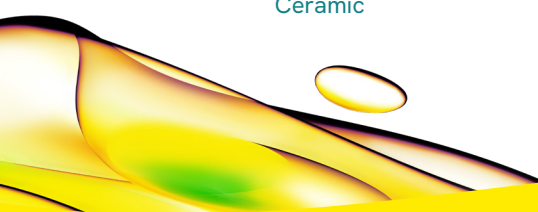
Garnet



Glass



Metal



revvity