

Sample
preparation
made easy.



revvity

CF-260 Centrifuge

Ultimate flexibility and power.

The CF-260 is a high-speed laboratory centrifuge designed for use in medical and scientific laboratories for separating substances with different relative densities by using centrifugal force. The maximum rotational speed of 18,000 rpm gives the centrifugal force of 31,150 rcf.

Its ergonomic and state-of-the-art design makes the CF-260 a user-friendly instrument.

The interface is modern and offers great visibility with big LED lights. The CF-260 uses only one knob and big, illuminated buttons. Very clear notification of each parameter helps the user proceed with quick parameter adjustments. All the parameters are also very clearly noticeable on separate LED displays.



User manual, rotor key, and power cord included with instrument.
All rotors, buckets, and inserts are sold separately.
Part number: CF-260-120/220/220UK

Specifications

Power rating	CF-260-120 - 120V, 50/60 Hz
	CF-260-220 - 220V, 50/60 Hz
	CF-260-220UK - 220V, 50/60 Hz
Max. power consumption	450 watts
Max. rotation speed	200 to 18,000 rpm, in steps of 10 rpm
Maximum G force	31,150 rcf
Maximum capacity	6 x 50 mL (angle rotor) 6 x 12 mL (swing out rotor)
Rotors available	10
Time	10 s to 99 min and continuous, step 10 s
Programs	100
Acceleration levels	10
Deceleration levels	10 (Level 0 without braking)
Display	LED
Noise level (at max. speed)	≤ 66 dBA
Fast spin	Yes
Lid locking mechanism	Motorized
Lid Lock	2 Latches
Motor type	Induction brushless motor
Permitted ambient conditions	2 to 35 °C, Humidity: 75 %, Non-condensing
Dimensions	W: 14.2" (36.0 cm), D: 16.9" (43.0 cm), H: 11.3" (28.8 cm) (H: lid open 23.9" (60.6 cm))
Weight	49.6 lbs. (22.5 kg)
Warranty	One year
Certification	CE

Rotors



**24 x 2 mL
Microcentrifuge Tube
Rotor with Lid**

Part number: 228442

- Rotor type: RA 24/2 angle rotor with lid
- Maximum capacity: 24 x 1.5/2.0 mL microcentrifuge tubes - optional 0.2 mL or 0.5 mL adapters for PCR tubes (283451 or 283349)
- Maximum tube dimensions: 11 x 40 mm
- Maximum speed: 15,000 rpm
- Maximum centrifugal force: 21,630 rcf
- Radius: 86 mm
- Angle: 45°
- Minimum acceleration time: 22 s
- Minimum braking time: 23 s
- Rotor and lid autoclavable: Yes



4 x 8 PCR Strip Rotor

Part number: 273335

- Rotor type: RA 6/PCR angle PCR strip rotor
- Maximum capacity: 6 x 8 PCR strips
- Maximum tube dimensions: 9 x 22 mm
- Maximum speed: 13,000 rpm
- Maximum centrifugal force: 18,520 rcf
- Radius: 98 mm
- Angle: 48°
- Minimum acceleration time: 22 s
- Minimum braking time: 21 s
- Rotor and Lid Autoclavable: Yes



**24 x 2 mL
Microcentrifuge Tube
Rotor with Aerosol Lid**

Part number: 375944

- Rotor type: RA 24/2 angle rotor with aerosol tight lid
- Maximum capacity: 24 x 1.5/2.0 ml microcentrifuge tubes - optional 0.2 ml or 0.5 ml adapters for pcr tubes (283451 or 283349)
- Maximum tube dimensions: 11 x 40 mm
- Maximum speed: 15,000 rpm
- Maximum centrifugal force: 21,630 rcf
- Radius: 86 mm
- Angle: 45°
- Minimum acceleration time: 21 s
- Minimum braking time: 21 s
- Rotor and lid autoclavable: yes



**16 x 5 mL
Microcentrifuge Tube
Rotor with Aerosol Lid**

Part number: 403055

- Rotor type: RA 16/5 angle rotor with aerosol tight lid
- Maximum capacity: 16 x 5.0 ml microcentrifuge tubes
- Maximum tube dimensions: 16.5 x 75 mm
- Maximum speed: 13,000 rpm
- Maximum centrifugal force: 18,520 rcf
- Radius: 98 mm
- Angle: 45°
- Minimum acceleration time: 22 s
- Minimum braking time: 22 s
- Rotor and Lid Autoclavable: Yes



**30 x 2 mL
Microcentrifuge Tube
Rotor with Lid**

Part number: 228451

- Rotor type: RA 30/2 angle rotor with lid
- Maximum capacity: 30 x 1.5/2.0 ml microcentrifuge tubes - optional 0.2 ml or 0.5 ml adapters for pcr tubes (284351 or 283349)
- Maximum tube dimensions: 11 x 40 mm
- Maximum speed: 13,000 rpm
- Maximum centrifugal force: 18,520 rcf
- Radius: 98 mm
- Angle: 45°
- Minimum acceleration time: 21 s
- Minimum braking time: 21 s
- Rotor and lid autoclavable: yes



**24 x Glass
Hematocrit Rotor**

Part number: 246701

- Rotor type: RH 24 hematocrit rotor with reading device
- Maximum capacity: 24 x glass hematocrit capillary tubes
- Maximum tube dimensions: 1.6 x 75 mm
- Maximum speed: 13,000 rpm
- Maximum centrifugal force: 18,520 rcf
- Radius: 98 mm
- Angle: 90°
- Minimum acceleration time: 20 s
- Minimum braking time: 21 s
- Rotor and lid autoclavable: yes



6 x 50 mL Tube Rotor

Part number: 448806

- Rotor type: RS 6/50 angle rotor with shields
- Maximum capacity: 6 x 50 ml conical centrifuge tubes or 6 x 15 ml conical centrifuge tubes with adapters a15 (462092)
- Maximum tube dimensions: 30 x 115 mm
- Maximum speed: 6,000 rpm
- Maximum centrifugal force: 4,430 rcf
- Radius: 110 mm
- Angle: 45°
- Minimum acceleration time: 26 s
- Minimum braking time: 27 s
- Rotor and shields autoclavable: yes



6 x 12 mL Tube Rotor

Part number: 398241

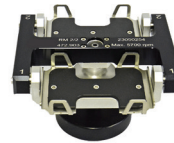
- Rotor type: RS 6/12 swing out rotor with shields
- Maximum capacity: 6 x 12 ml centrifuge tubes
- Maximum tube dimensions: 16 x 105 mm
- Maximum speed: 4,400 rpm
- Maximum centrifugal force: 2,600 rcf
- Radius: 63 mm
- Angle: 90°
- Minimum acceleration time: 26 s
- Minimum braking time: 27 s
- Rotor and shields autoclavable: yes



8 x 15 mL Tube Rotor

Part number: 448807

- Rotor type: RA 8/15 angle rotor with shields
- Maximum capacity: 8 x 15 ml conical centrifuge tubes - optional a5 adapters for tubes with length 75 to 90 mm (450281)
- Maximum tube dimensions: 17 x 120 mm
- Maximum speed: 6,000 rpm
- Maximum centrifugal force: 4,440 rcf
- Radius: 110 mm
- Angle: 40°
- Minimum acceleration time: 26 s
- Minimum braking time: 27 s
- Rotor and shields autoclavable: yes



2 Place Microtitration Plate Rotor

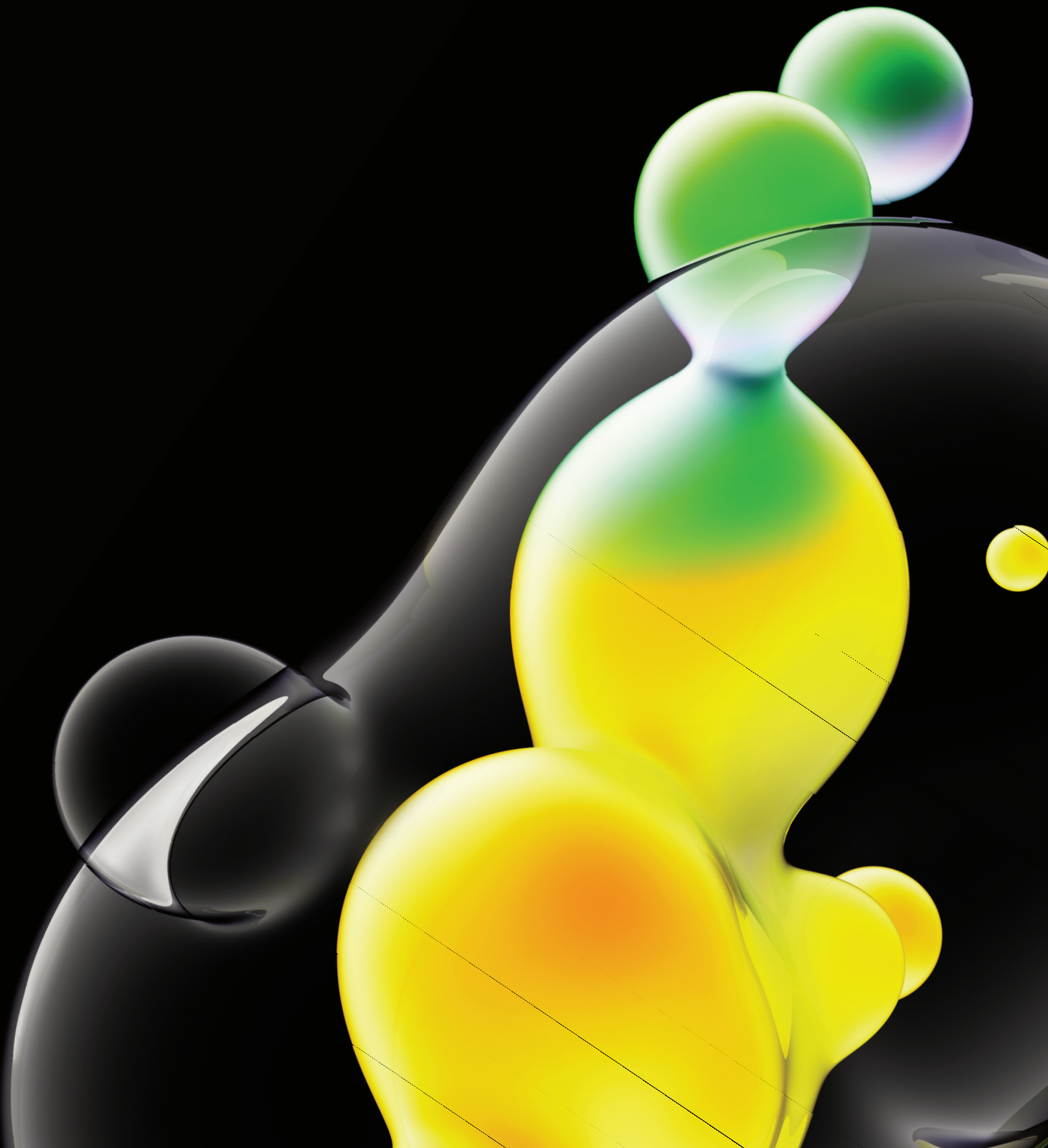
Part number: 429192

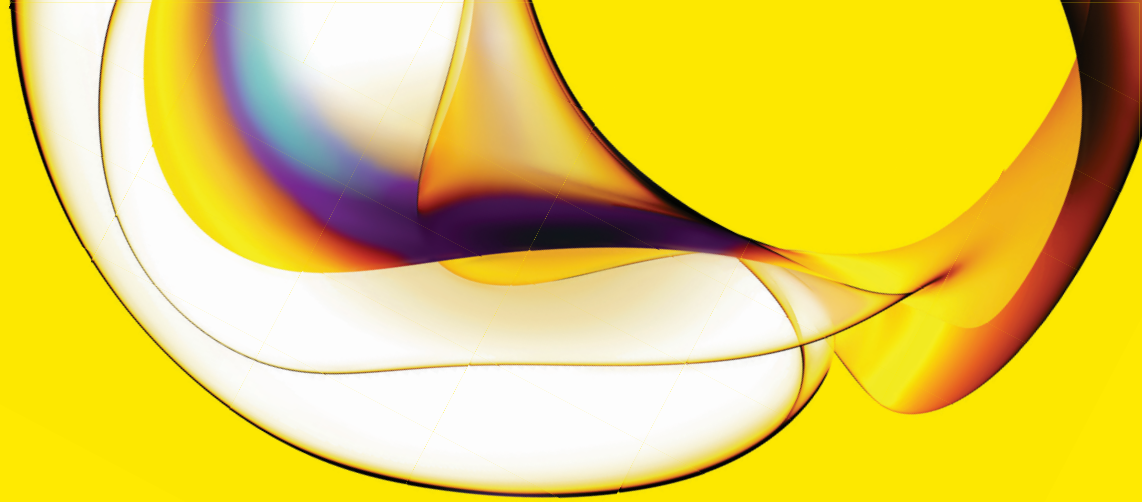
- Rotor type: RM 2/2 two place swing out rotor with microtitration buckets
- Maximum capacity: 4 x microtitration plates
- Maximum tube dimensions: 86 x 128 mm
- Maximum speed: 5,700 rpm
- Maximum centrifugal force: 2,380 x rcf
- Radius: 85 mm
- Angle: 90°
- Minimum acceleration time: 27 s
- Minimum braking time: 28 s
- Rotor and lid autoclavable: yes

Rotor tube compatibility

Rotor	RA 24/2 & 24/2 AERO			RA 30/2			RA 8/15			RA 16/5	
Rotor order no.	228442 or 375944			228451			448807			403055	
Tube type	PCR	PCR	Micro	PCR	PCR	Micro	Blood Collection		Conical	Micro	
Tube image											
Nominal vol. (mL)	0.2/0.4	0.5	1.5 to 2	0.2/0.4	0.5	1.5 to 2	5	7 - 10	12-Oct	15	5
Dimensions (mm) (D x L)	6 x 18	8 x 30	11 x 38	6 x 18	8 x 30	11 x 38	13 x 75	13 x 100	16 x 100	17 x 120	16.5 x 75
Adapter image			-			-		-	-	-	-
Adapter	A0.2	A0.5	-	A0.2	A0.5	-	A5	-	-	-	-
No. tube/rotor	24	24	24	30	30	30	8	8	8	8	16
No. tube/adapter	24	24	0	30	30	0	8	0	0	0	-
Order no.	238451	284349	-	238451	284349	-	450281	-	-	-	-

Rotor	RS 6/12			RA 6/50		RH 24	RA 6/PCR	RM 2/3
Rotor order no.	398241			448806		246701	273335	429192
Tube type	Blood Collection		Conical	Conical	Capillaries	8-Well PCR Strip	Standard MTP	
Tube image								
Nominal vol. (mL)	5	7 - 10	12-Oct	15	50	0.075	0.2	96 x 350 µL max.
Dimensions (mm) (D x L)	13 x 75	13 x 100	16 x 100	17 x 120	30 x 115	1.6 x 75	-	128 x 86 x 15
Adapter image	-	-	-		-	-	-	-
Adapter	-	-	-	A15	-	-	-	-
No. tube/rotor	6	6	6	6	6	24	48	4
No. tube/adapter	-	-	-	6	0	-	-	-
Order no.	-	-	-	462092	-	-	-	-





www.revvity.com

revvity

Revvity, Inc.
940 Winter Street
Waltham, MA 02451 USA
www.revvity.com

For a complete listing of our global offices, visit www.revvity.com
Copyright ©2023, Revvity, Inc. All rights reserved.

For research use only. Not for use in diagnostic procedures.

1414122